

## IMPORTANT - READ OPERATOR'S MANUAL BEFORE OPERATION

### Seat Adjustment

Loosen bolts on sliding bracket under each side of seat, slide seat forward or rearward to desired position. Re-tighten bolts. Do not operate mower with bracket bolts in a loose condition.

### Mower Blade Operation

To start mower blades, pull out on blade drive switch handle, then lift to "ON" position.

To stop mower blades, move switch handle to "OFF" position.

### Body Removal

1. Disconnect throttle cable from engine.
2. Disconnect the rear wiring loom (P/N 4191) from the body by lightly squeezing the Econo-Seal plug. This plug is located at the left rear of the body.
3. Remove 4 control lever bolts and remove upper control levers (P/N 1689 & T690)
4. Remove the 2 attach nuts on floor of body and unfasten latch located at center of body at the rear.
5. Place height adjustment lever in vertical position, engage parking brake and carefully lift body up and off chassis.
6. Reverse the above procedure for assembly.

### Safety Checks

1. After reassembly, while on seat, attempt to start engine with mower deck engaged. Engine should not start. If engine does start, return to an authorized Dixon dealer for adjustment or repair.
2. Disengage the mower deck and start the engine. With operator in normal mowing position, engage mower deck and remove weight from seat. The engine should stop. If engine does not stop when operator rises from seat, return to an authorized Dixon dealer for adjustment or repair.

### Parking Brake Adjustment

Remove body as described above. Tighten nut on brake rod (P/N 2533) (located in front of the transaxle on each side), just enough to prevent brake from slipping when engaged.

CAUTION: Over Tightening may cause premature wear on brake band (P/N 5085).

### Mower Drive Belt Adjustment

No adjustment necessary, the spring-loaded idler pulley maintains proper tension throughout the belt life.

### Removing Mower Deck

1. Remove mower deck drive belt (P/N 6360) by pulling idler assembly (P/N 1671) away from belt and remove from rear pulley.
2. Remove 4 attach pins (P/N 6107) and clips from 4 mower deck attach points and 2 stabilizer bars (P/N 6159).
3. Remove 2 hairpin cotter (P/N 3072) from rear discharge chute hangers (P/N 6365).
4. Raise front of mower chassis and roll free of mower deck for service or replacement.
5. To re-install, reverse the above procedure.

### Removing Mower Cutter Blade

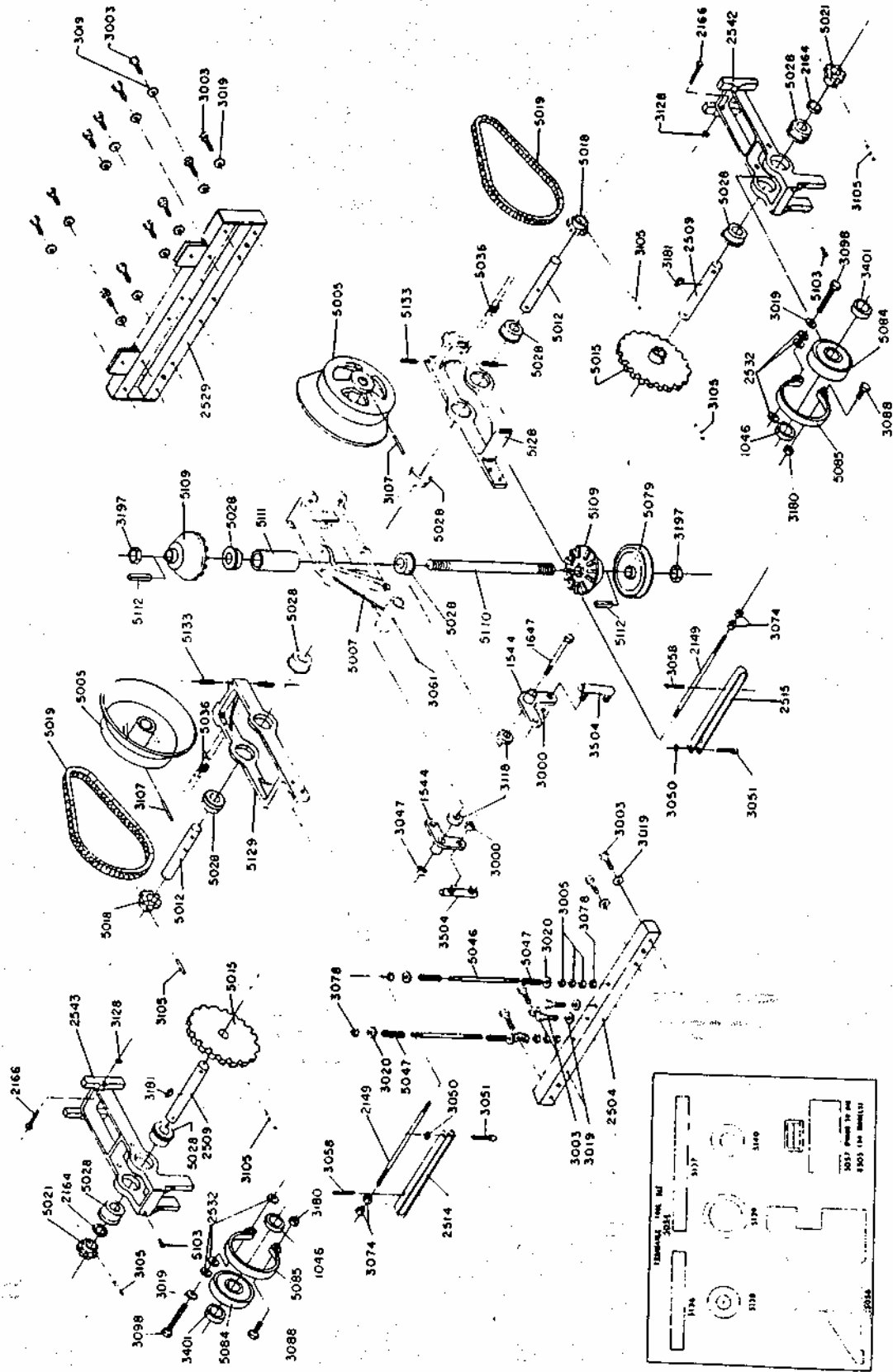
Secure mower cutter blade (P/N 6092 ) from turning (observe blade position when removing) remove blade bolt from center of blade



## PARTS LIST FOR ZTR-425

<u>PART #</u>	<u>NAME</u>	<u>PART #</u>	<u>NAME</u>	<u>PART #</u>	<u>NAME</u>
1015	Caster	3023	¼ Helical Lockwasher	3578	Nylon Bushing
1022	Caster Wheel & Tire	3029	Front Gromment	3579	Electric Clutch
1030	Upper Lift Link	3031	5/16 - 18 UNC Acorn Nut	3584	Decal - Ignition Sw/Blade Drive
1039	Lower Lift Link	3033	½ SAE Flatwasher	3585	Decal - Cutting Height
1046	Lift Tule Short	3036	3/8 -16 UNC Hex Locknut	3589	Spacer - Electric Clutch
1108	Tire - Front Wheel	3037	3/8-24 UNF X 1 ¼ HH Bolt Gr.5	3590	Key - ¼ sq. X ½
1109	Inner Tule-Front Wheel	3039	3/8-24 UNF Hex Lug Nut	4009	Wire Clip
1110	Caster Axle Bushing	3046	3/8 -16 UNC x 2 HH Bolt	4013	Wire Tie
1140	Caster Wheel Bearing	3047	3/8 - 24 UNF Hex Locknut	4014	Seat
1503	Wheel Hub Assembly	3050	# 10 - 24 UNC Hex Locknut	4047	Seat Switch
1504	Wheel Hub	3051	# 10 -24 UNC x 1 ¾ Soc. Hd. Bolt	4075	10 Amp Fuse
1507	Wheel/Deck Hub Bearing	3052	3/32 x 3/4 Cotter Pin	4092	Fuse Holder
1509	Rear Wheel & Tire	3053	# 10 x 1 HH SM Screw	4124	Solenoid
1511	Real Rim (18 X 9.5 - 8.00)	3054	3/16 x 1 Roll Pin	4148	Seat Angle
1512	Real Tire (18 X 9.5 - 8.00)	3056	5/16 Fender Washer	4190	Body Wiring Loom
1536	Chain Connecting Link	3057	1/8 x 2 Cotter Pin	4191	Rear Wiring Loom
1544	Bellcrank	3058	3/16 x 3/4 Roll Pin	4197	Ignition Switch
1636	Bellcrank Kit	3060	5/16 x 18 UNC x 3/8 Socket Set Screw	4198	Blade Drive Clutch Switch
1647	Control Pin	3061	# 10 - 24 UNC x 1 ¼ Rd. Hd. Screw	4201	Switch Key for 4197
1654	Transaxle Idler Bracket	3063	3/8 Helical Lockwasher	4204	Flex Guard Wiring Cover
1655	Transaxle Idler Pulley	3065	3/16 Std Flatwasher	4209	Throttle Cable
1657	Transaxle Idler Spring	3066	# 10 - 24 UNC x 1 Rd. Hd. Screw	4211	Solenoid Starter Cable
1667	Lower Control Lever	3072	5/16 - 24 UNF Hex Jam Nut	4215	Solenoid / Battery Cable
1668	Drive Pulley	3074	3/8 - 24 UNF Hex Jam Nut	4216	Battery Ground Cable
1670	Idler Pulley	3076	3/8 - 24 UNF Hex Nut	4217	Battery
1671	Idler	3078	5/16 -18 UNC Hex Locknut	4220	Seat Assembly
1672	Bronze Bushing	3087	5/16 -18 UNC X 3/4 HH Bolt	5005	Discup
1673	Spring Mount	3088	¼ -20 x 1 HH Bolt Gr. 5	5007	Cone Frame
1675	Clutch Anchor	3093	5/16 -18 UNC HH Bolt	5012	Cradle Shaft
1678	Flat Idler Pulley	3098	5/16 -18 x 3 HH Bolt	5015	Sprocker - 24 T
1679	Chain Tensioner Bracket	3101	7/16 Lockwasher - Helical	5018	Sprocker 9T - Narrow
1682	Chain Tensioner "L" Rod	3103	3/8 -24 x 1 HH Bolt Gr. 5	5019	Transaxle Chain
1689	Upper Control Lever w/grip L	3105	¼ x 1 ¼ HD Spirol Pin	5021	Sprocket 9T - Wide
1690	Upper Control Lever w/grip R	3107	¼ x 1 ¼ HD Spirol Pin	5028	Transaxle Bearing
2100	Bumper	3116	5/16 -18 UNC x 1 Carriage Bolt	5036	Pivot Spring
2105	Bumper Pad	3118	Disc Spring	5046	Positive Neutral Rod
2115	Model Decal	3119	Retaining Ring	5047	Positive Neutral Spring
2116	Walking Beam	3120	Nylon Showlder Bushing	5050	Positive Neutral Kit
2118	Frame	3128	7/16 - 14 UNC Hex Jam Nut	5079	HD Transaxle Pulley
2127	Quadrant Spring	3129	Plastic Tube Closure	5084	Brake Drum
2134	Lift Handle	3133	# 8 - 32 x ½ Tr. 3 Screw	5085	Brake Band
2149	Torque Rod	3134	¼ - 28 x ¼ Soc. Set Screw	5103	Eye Bolt
2154	Hub Pulley Spacer	3156	5/16 - 18 UNC 2A x 1.125 Long HH Bolt	5106	Cone Frame Assembly
2164	Support Sprocket Spacer	3158	5/16 -18 UNC Hex Locknut Gr. 8	5109	Molded Cone / Keyed
2166	Pivot Bolt	3159	Disc Spring	5110	Cone Frame Shaft
2186	Body	3161	5/16 - 24 UNF Nut LH Thread	5111	Sleeve (fits 5110)
2237	Tie Bar Assembly	3174	½ -13 X 1 HH Bolt	5112	Key Sq. 3/16 x 1 ½ (fit 5110)
2238	Tie Bar	3175	½ -13 X 1 ½ HH Bolt	5128	Cradle L
2246	Battery Box	3180	¼ -20 Hex Locknut	5129	Cradle R
2408	Drive Chain Assembly	3181	Woodruff Key #605	5133	Cradle Spring
2417	Control Rod Assembly	3182	Flip Lock Bushing	6059	Flat Idler Pulley
2422	Name Decal	3185	Washer	6065	Serpentine Idler Spring
2460	Parking Brake Decal	3186	# 12-24 X 3/8 Drill & Tap Screw	6092	Mower Blade
2469	Transaxle Drive Belt	3187	# 10 - 32 Hex Nut	6100	Outer Shaft Key
2475	Control Rod	3188	# 10 Ex. Tooth Lockwasher	6107	Deck Pin
2504	Rront Tube	3189	½ - 13 x 5 ½ Carriage Bolt	6113	Blade Washer
2509	Support Shaft	3192	7/16-20 X 3 HH Bolt Gr. 5	6156	Serpentine Idler
2514	Torque Rod Stiffener R	3193	Washer .43 X 1.38 X .25	6158	Serpentine Idler Assembly
2515	Torque Rod Stiffener L	3194	Face Nut 5/8 - 32	6159	Stabilizer Arm
2526	Brake Link L	3195	Face Nut ½-27	6344	Discharge Chute
2527	Brake Link R	3197	5/8 - 11 Jam Lock Nut	6360	Deck/Blade Drive Belt
2529	Rear Tube	3198	¼ - 20 Wing Nut w/ny	6362	Mower Deck Pan
2532	Spacer 5/16 x .203	3199	5/16 -18 x 2 ½ HH Bolt	6365	Discharge Chute Hanger
2533	Brake Rod	3300	Foam Pad	6375	Mower Deck Hub
2534	Brake Handle	3401	Tube	6378	Mower Deck Hub Sub Assembly
2536	Brake Arm	3402	Bronze Bushing	6379	Spacer - Electric Clutch
2538	Brake Arm Stop	3500	Ball Joint / Control Rod RH Thread	6380	Outer Shaft
2542	Support Casting L	3502	Hand Grip	6381	Center Shaft
2543	Support Casting R	3503	Ball Joint / Control Rod LH Thread	6385	Mower Deck V-Pulley (4.5)
2823	Oil Drain Assembly	3504	Bouble Ball Joint	6386	Mower Deck V-Pulley (4.0)
3000	5/16-24 UNC Hex Locknut	3507	Floor Pad - Long	6387	Belt/pulley Guard
3003	5/16-18 UNH x 1 ½ HH Bolt	3508	floor Pad - Short	6388	Outer Hub Assembly
3005	5/16-18 UNH HH Bolt	3511	Adhesive Bumper Pad	6389	Center Hub Assembly
3007	¼ - 20 UNC Hex Nut	3531	Decal - Operating Insruction	8502	Caster Axle Kit
3009	5/16-18 x 1 ¾ HH Bolt Gr. 5	3536	Warning Label - Danger	8503	Front Rim
3010	½ x 2 ¼ Rd. Hd. Nut	3552	Tank Mount Bracket - Long	8507	Wiring Kit
3012	3/8-16 UNC Hex Nut	3553	Tank Mount Bracket - Short		
3013	½ - 13 UNC Hex Locknut	3554	Fuel Cap/Gauge		
3014	¼ - 20 UNC x 3/4 HH Bolt Gr. 2	3556	Tank Support L		
3016	3/8-24 UNF X 7/8 Lug Bolt	3558	2 gal. Tank w/cap-gauge		
3019	5/16 Helical Lockwasher	3577	Battery Cover		
3020	5/16 Std. Flatwasher				





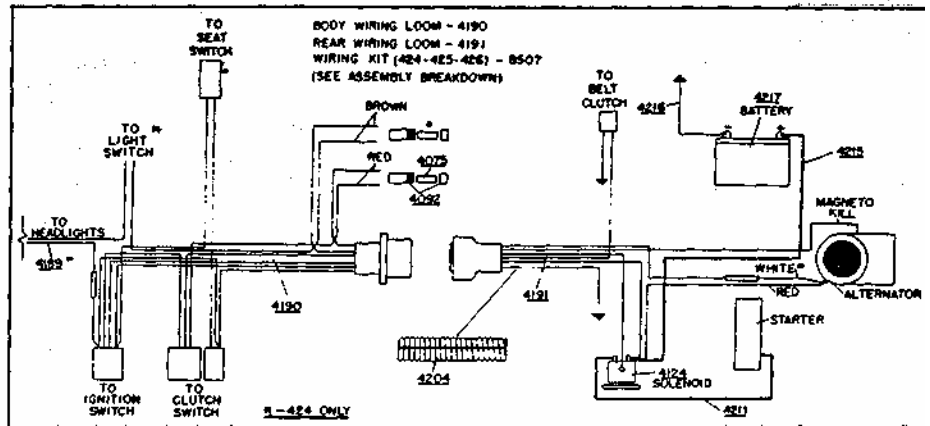
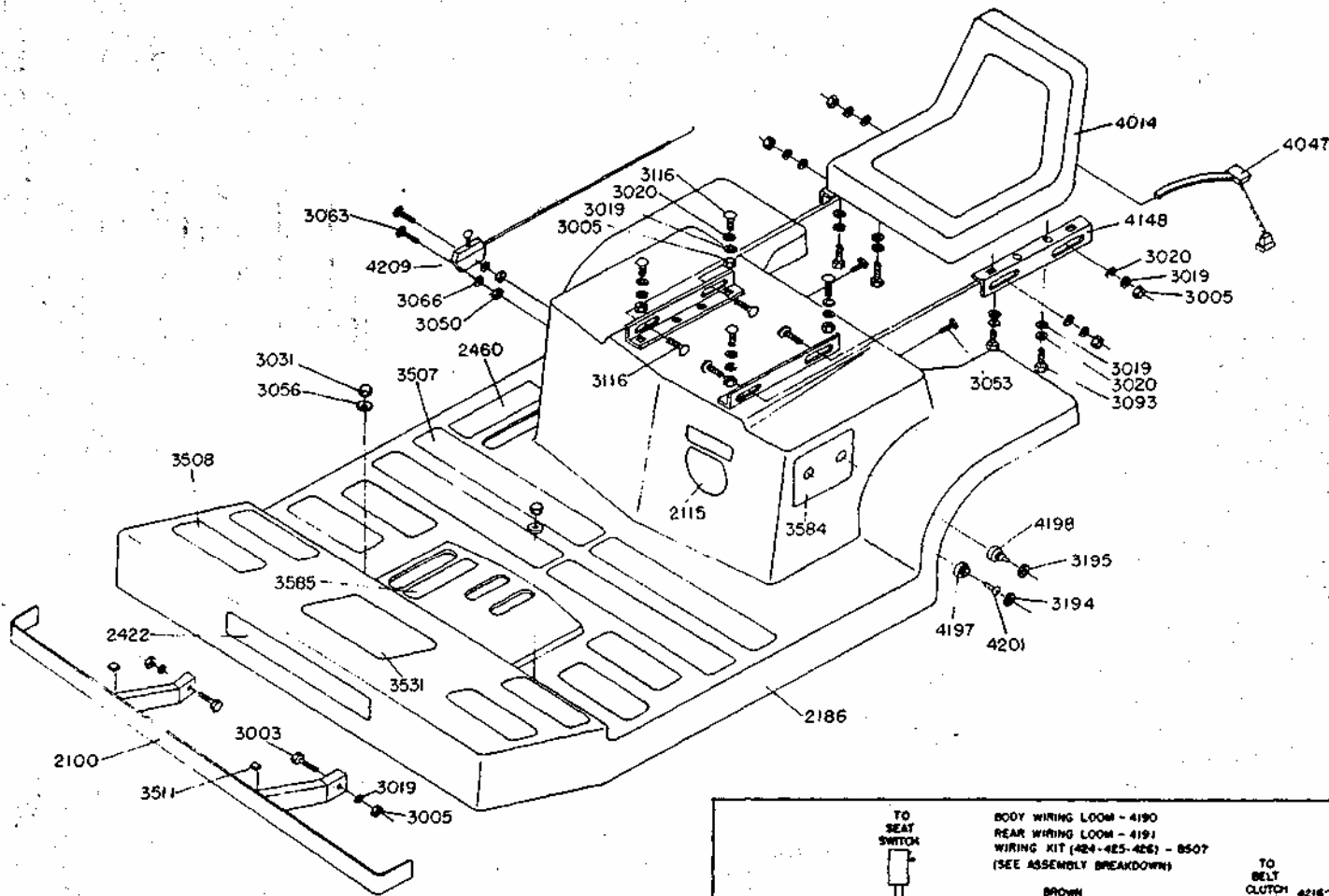


Illustration – Body Assembly (Model ZTR 425)

# Illustration - Mower Deck Assembly 42" Rear Discharge (Model ZTR 425)

