

TECHNICAL DATA BROCHURE ZTR 426

Date 8/84

IMPORTANT - READ OPERATOR'S MANUAL BEFORE OPERATION.

Page 1 of 6

Seat Adjustment

Loosen bolts on sliding bracket under each side of seat, slide seat forward or rearward to desired position. Re-tighten bolts. Do not operate mower with bracket bolts in a loose condition.

Mower Blade Operation

To start mower blades, pull out on blade drive switch handle, then lift to "ON" position.

To stop mower blades, move switch handle to "OFF" position.

Body Removal

1. Disconnect throttle cable from engine.
2. Disconnect the rear wiring loom (P/N 4191) from the body by lightly squeezing the Enono-Seal plug. This plug is located at the left rear of the body.
3. Remove 4 control lever bolts and remove upper control levers (P/N 1689 & 1690)
4. Remove the 2 attach nuts on floor of body and unfasten latches located on each side of body at the rear.
5. Place height adjustment lever in vertical position, engage parking brake and carefully lift body up and off chassis.
6. Reverse the above procedure for assembly.

Safety Checks

1. After reassembly, while on seat, attempt to start engine with mower deck engaged. Engine should not start. If engine does start, return to an authorized Dixon dealer for adjustment or repair.
2. Disengage the mower deck and start the engine. With operator in normal mowing position, engage mower deck and remove weight from seat. The engine should stop. If engine does not stop when operator rises from seat, return to an authorized Dixon dealer for adjustment or repair.

Parking Brake Adjustment

Remove body as described above. Adjustment points are located at rear of trans-axle on each side. Remove cotter pin from swivel fitting (P/N 2172). Turn swivel fitting on brake rod (P/N 5100) in to tighten - just enough to prevent brake from slipping when engaged. CAUTION: Over tightening may cause premature wear on brake band (P/N 5085).

Mower Drive Belt Adjustment

No adjustment necessary, the spring-loaded idler pulley maintains proper tension throughout the belt life.

Removing Mower Deck

1. Remove mower deck drive belt (P/N 6111) by pulling idler assembly (P/N 1671) away from belt and remove belt from rear pulley.
2. Remove 4 attach pins (P/N 6107) and clips from 4 mower deck attach points and 2 stabilizer bars (P/N 6159).
3. Raise front of mower chassis and roll free of mower deck for service and/or replacement.
4. To re-install, reverse the above procedure.

Removing Mower Cutter Blade

Secure mower cutter blade (P/N 6092) from-turning (observe blade position when removing) remove blade bolt from center of blade.

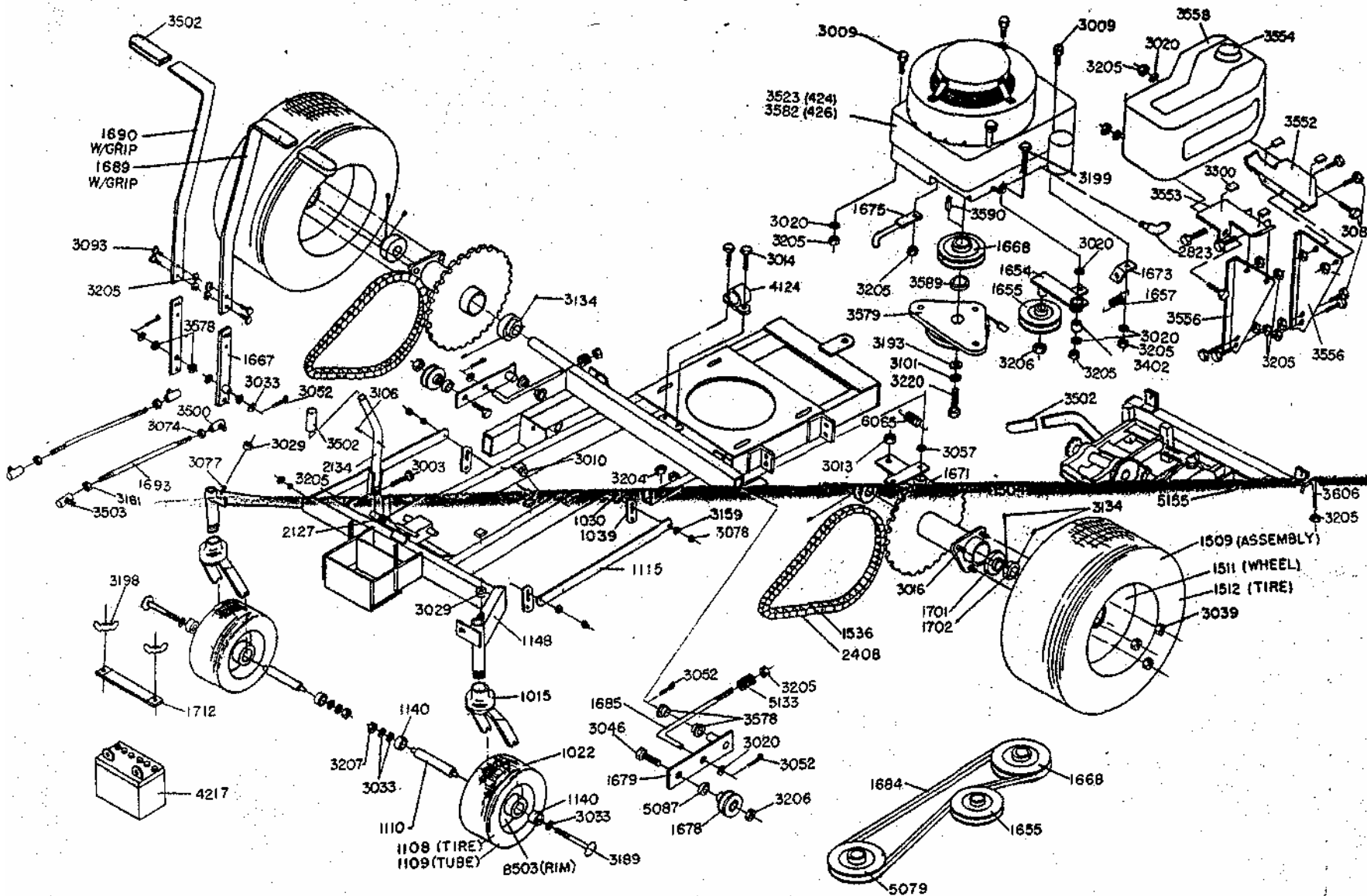


(P/N 8552)

PARTS LIST FOR ZTR-426

PART #	NAME	PART #	NAME	PART #	NAME
1015	Caster	3088	¼ -20 x 1 HH Bolt Gr. 5	4241	Body
1022	Caster Wheel & Tire	3093	5/16 -18 UNC HH Bolt	5005	Discup
1030	Upper Lift Link	3101	7/16 Lockwasher - Helical	5011	Support Shaft
1039	Lower Lift Link	3105	¼ x 1 ¼ HD Spirol Pin	5015	Sprocker -24 T
1108	Tire - Front Wheel	3106	¼ x 1 Spirol Pin	5019	Transaxle Chain
1109	Inner Tule-Front Wheel	3107	¼ x 1 ½ HD Spirol Pin	5028	Transaxle Bearing
1110	Caster Axle Bushing	3116	5/16 - 18 UNC x 1 Carriage Bolt	5036	Pivot Spring
1115	Tie Bar	3118	Disc Spring	5046	Positive Neutral Rod
1140	Caster Wheel Bearing	3128	7/16 - 14 UNC Hex Jam Nut	5050	Positive Neutral Kit
1148	Frame	3133	# 8 - 32 x ½ Tr. 3 Screw	5079	HD Transaxle Pulley
1502	Control Rod Assembly	3134	¼ -28 x ¼ Soc. Set Screw	5084	Brake Drum
1503	Wheel Hub Assembly	3156	5/16 - 18 UNC 2A x 1.125 Long HH Bolt	5085	Brake Band
1504	Wheel Hub	3159	Disc Spring	5086	Brake Spacer 5/8 x 5/16
1506	Hub Flange	3161	5/16 - 24 UNF Nut LH Thread	5087	Brake Spacer 3/8 x ½
1509	Rear Wheel & Tire	3174	½ -13 X 1 HH Bolt	5088	Brake Shaft
1511	Real Rim (18 X 9.5 - 8.00)	3175	½ -13 X 1 ½ HH Bolt	5097	Brake Lever
1512	Real Tire (18 X 9.5 - 8.00)	3178	3/8 - 16 x 2½ HH Bolt	5100	Brake Rod
1536	Chain Connecting Link	3180	¼ -20 Hex Locknut	5101	Brake Link
1544	Bellcrank	3181	Woodruff Key #605	5103	Eye Bolt
1630	Bumper	3182	Flip Lock Bushing	5109	Molded Cone / Keyed
1636	Bellcrank Kit	3187	# 10 - 32 Hex Nut	5110	Cone Frame Shaft
1647	Control Pin	3188	# 10 Ex. Tooth Lockwasher	5111	Sleeve (fits 5110)
1654	Transaxle Idler Bracket	3189	½ - 13 x 5 ½ Carriage Bolt	5112	Key Sq. 3/16 x 1 ½ (fit 5110)
1655	Transaxle Idler Pulley	3191	Pop Rivet 5/32 Dia.	5133	Cradle Spring
1657	Transaxle Idler Spring	3192	7/16-20 X 3 HH Bolt Gr. 5	5151	Toroque Rod Adjuster
1667	Lower Control Lever	3193	Washer .43 X 1.38 X .25	5152	Toroque Rod
1668	Drive Pulley	3194	Face Nut 5/8 - 32	5153	Cradle
1671	Idler	3195	Face Nut ½-27	5154	Front Frame Tube
1672	Bronze Bushing	3197	5/8 - 11 Jam Lock Nut	5155	Transaxle Assembly
1673	Spring Mount	3198	¼ - 20 Wing Nut w/ny	5156	Cradle Shaft
1675	Clutch Anchor	3199	5/16 -18 x 2 ¼ HH Bolt	5162	Support L
1678	Flat Idler Pulley	3204	¼ - 20 Hex Nut w/Nylok	5163	Support R
1679	Chain Tensioner Bracket	3205	5/16 - 18 Hex Nut w/Nylok	5164	Sprocket 9T
1684	Transaxle Drive Belt	3206	3/8 - 16 Hex Nut w/Nylok	5165	Cone Frame
1685	Chain Tensioner "L" Rod	3207	½ - 13 Hex Nut w/Nylok	5166	Cone Frame Assembly
1687	Idler Pulley	3208	# 10 - 24 Hex Nut w/Nylok	5167	Rear Frame Tube
1689	Upper Control Lever w/grip L	3209	½ - 20 Jam Nut	5170	HD Positive Neutral Spring
1690	Upper Control Lever w/grip R	3300	Foam Pad	6024	Bearing Spacer
1693	Control Rod	3402	Bronze Bushing	6032	Mower Deck V-Pulley
1701	Bearing	3500	Ball Joint / Control Rod RH Thread	6033	Center Hub Assembly
1702	Locking Collar	3502	Hand Grip	6042	Outer Hub Assembly
1712	Battery Strap	3503	Ball Joint / Control Rod LH Thread	6043	Center Shaft
2127	Quadrant Spring	3504	Bouble Ball Joint	6046	Center Shaft
2134	Lift Handle	3507	Floor Pad - Long	6047	Outer Shaft
2166	Pivot Bolt	3508	floor Pad - Short	6058	V-Pulley
2172	Swivel Fitting	3511	Adhesive Bumper Pad	6059	Flat Idler Pulley
2408	Drive Chain Assembly	3531	Decal - Operating Insruction	6065	Serpentine Idler Spring
2460	Parking Brake Decal	3536	Warning Label - Danger	6078	Pulley Spacer
2823	Oil Drain Assembly	3551	Model Decal	6092	Mower Blade
3000	5/16-24 UNC Hex Locknut	3552	Tank Mount Bracket - Long	6100	Outer Shaft Key
3003	5/16-18 UNH x 1 ½ HH Bolt	3553	Tank Mount Bracket - Short	6101	Center Shaft Key
3005	5/16-18 UNH HH Bolt	3554	Fuel Cap/Gauge	6107	Deck Pin
3007	¼ - 20 UNC Hex Nut	3556	Tank Support L	6109	Serpentine Blade Drive Belt
3008	¼ x 3/4 Flatwasher	3558	2 gal. Tank w/cap-gauge	6111	Deck Drive Belt
3009	5/16-18 x 1 3/4 HH Bolt Gr. 5	3578	Nylon Bushing	6113	Blade Washer
3010	½ x 2 ¼ Rd. Hd. Nut	3579	Electric Clutch	6151	Mower Deck Bearing (use w/6043)
3012	3/8-16 UNC Hex Nut	3584	Decal - Ignition Sw/Blade Drive	6156	Serpentine Idler
3013	½ - 13 UNC Hex Locknut	3585	Decal - Cutting Height	6159	Stabilizer Arm
3014	¼ - 20 UNC x 3/4 HH Bolt Gr. 2	3589	Spacer - Electric Clutch	6167	Hub Sub Assembly
3016	3/8-24 UNF X 7/8 Lug Bolt	3590	Key - ¼ sq. X ½	6168	Trash Guard
3019	5/16 Helical Lockwasher	3597	Battery Cover	6179	Mower Deck Pan
3020	5/16 Std. Flatwasher	3605	Clutch Decal - (Notice)	6180	Mower Deck Assembly
3029	Front Gromment	3606	J Bolt	6181	Deflector
3031	5/16 - 18 UNC Acorn Nut	3611	Body Latch	8502	Caster Axle Kit
3033	½ SAE Flatwasher	4009	Wire Clip	8503	Front Rim
3037	3/8-24 UNF X 1 ¼ HH Bolt Gr.5	4013	Wire Tie	8506	Tie Bar Assembly
3038	3/4 -16 UNC Hex Jam Locknut	4014	Seat	8541	Wiring Kit
3039	3/8-24 UNF Hex Lug Nut	4047	Seat Switch		
3046	3/8 -16 UNC x 2 HH Bolt	4075	10 Amp Fuse		
3047	3/8 - 24 UNF Hex Locknut	4092	Fuse Holder		
3048	3/8 -16 UNC x 1½HH Bolt	4124	Solenoid		
3052	3/32 x 3/4 Cotter Pin	4148	Seat Angle		
3056	5/16 Fender Washer	4190	Body Wiring Loom		
3057	3/8 Std. Flatwasher	4191	Rear Wiring Loom		
3061	5/16 18 UNCx 3/8 Soc. Set Sc.	4197	Ignition Switch		
3063	# 10 - 24 UNC x 1 ¼ Rd. Hd. Screw	4198	Blade Drive Clutch Switch		
3065	3/8 Helical Lockwasher	4201	Switch Key for 4197		
3066	3/16 Std Flatwasher	4204	Flex Guard Wiring Cover		
3072	1/8 x 1 3/4 Hair Pin Cotter	4211	Solenoid Starter Cable		
3074	5/16 - 24 UNF Hex Jam Nut	4216	Battery Ground Cable		
3076	3/8 - 24 UNF Hex Nut	4217	Battery		
3077	5/16 -18 UNC x 2 3/4 HH Bolt	4219	Name Decal		
3078	5/16 -18 UNC Hex Locknut	4220	Seat Assembly		
3083	¼ - 20 UNC x ½ Rd. Hd. Bolt	4230	Throttle Cable		
3087	5/16 -18 UNC X 3/4 HH Bolt	4234	Battery Cable		

Illustration - Chassis Assembly (Models ZTR 424 - 426)



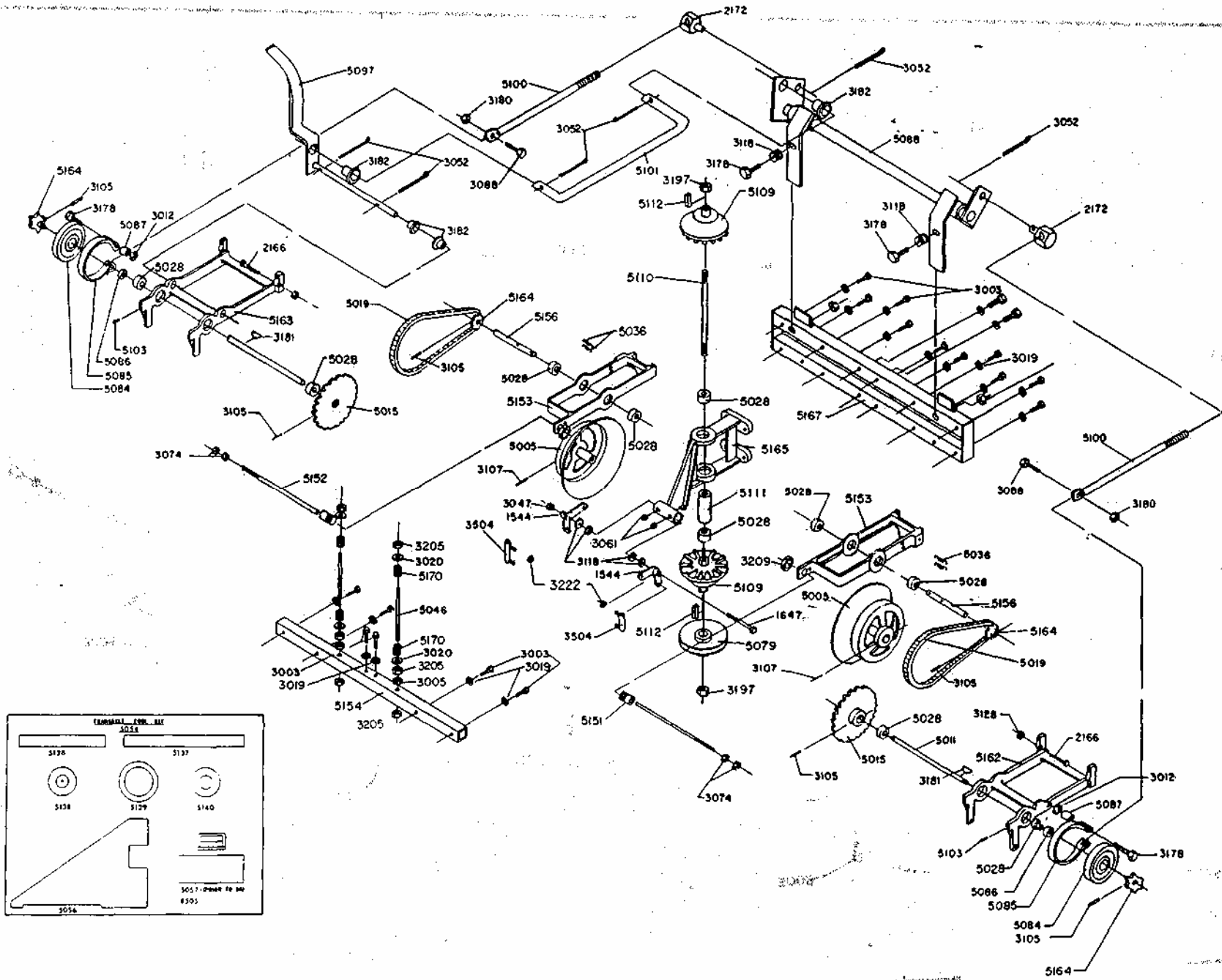


Illustration - Transaxle Assembly (Models ZTR 424 - 426)

Illustration - Mower Deck Assembly 42" (Models ZTR 424 - 426)

